

SCUFF-X[®]

Unmatched Durability for High-Traffic Areas




Benjamin Moore[®]

The perfect choice for any high-traffic area

Benjamin Moore, the leader in colour technology and innovation, engineered Scuff-X® Interior latex paint in four ultra durable and high-performance finishes (matte, eggshell, pearl and semi-gloss) to protect the most challenging commercial spaces and ultimately reduce the cost of maintenance and repainting.



Retail
Fitting rooms, elevators,
employee common area



Healthcare
Hospital waiting rooms,
lobbies, corridors



Property Management
Condos, vacation rentals,
apartments



Education
Classrooms, hallways,
cafeteria, gymnasium



Hospitality
Guest rooms, waiting rooms, lobbies,
stairwells, dining rooms



Corporate
Corporate offices,
restaurants, transit hubs

SCUFF-X®

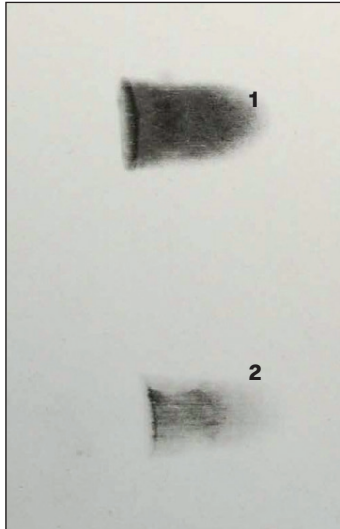
Scuff-X® outperforms leading competitors

Our innovative scuff and chip resistant technologies deliver unmatched long-term protection and durability.

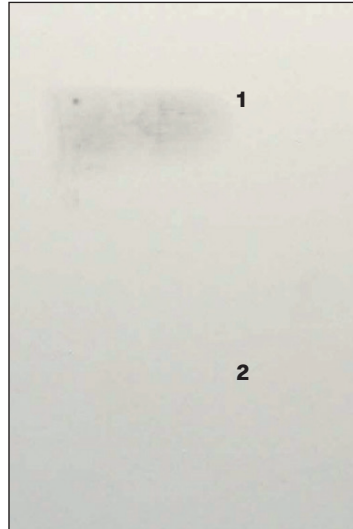


Our test results have shown that Scuff-X® delivers superior scuff resistance compared to traditional high-performance, two-component coatings designed for high-traffic areas.

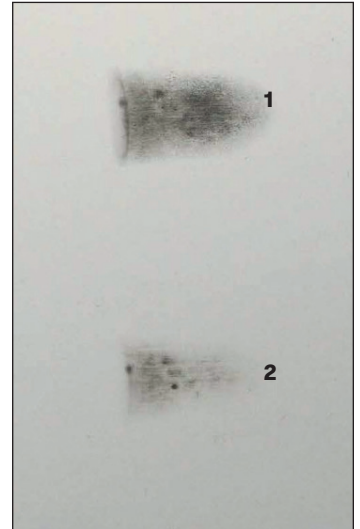
Leading Brand (A)
Eggshell Sheen



Scuff-X®
Eggshell Sheen



Leading Brand (B)
Eggshell Sheen

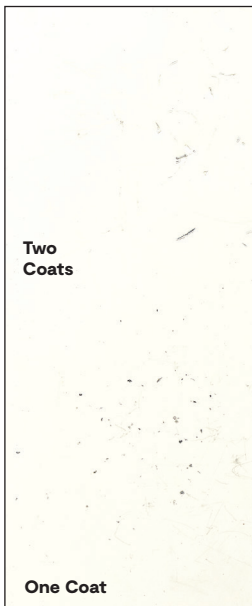


1) Uncleaned scuff mark 2) Scuff mark after cleaning with soap and water
Representative results; actual results may vary.



Our test results visibly show that Scuff-X® Chip-Tech® technology provides superior chip-resistance compared to two-component polyurethane, leading competitor paints and comparable with leading pre-cat epoxy*.

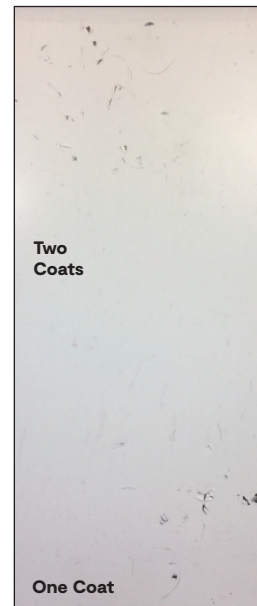
Scuff-X® Semi-Gloss



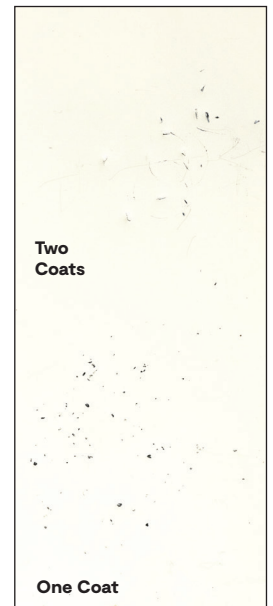
Two-Component Polyurethane



Commercial Grade Paint



Pre-Cat Epoxy



Representative results; actual results may vary.
*Internal testing in which we dropped steel nuts from varying heights on surfaces painted with Scuff-X semi-gloss and 3 leading competitors.

SCUFF-X®



Tougher than Scuff

Our patented scuff-resistant technology delivers outstanding durability even in the most challenging high-traffic environments. In busy hotels, restaurants and other hospitality venues where first impressions matter, Scuff-X® will help you keep hallways, waiting areas, lobbies, and locker rooms in pristine condition with minimal maintenance required.



Single-Component Latex Coating

Scuff-X® delivers scuff-resistance that is superior to two-component coatings, but without pre-mixing, short pot-life and application difficulties. Our patented latex formula is easier to work with and easily cleans up with soap and water, ultimately keeping walls looking freshly-painted longer.



Quick-Drying for Minimal Disruption and Fast Job Turnaround

Scuff-X® meets the needs of professional painting contractors and facility managers. The pearl finish delivers exceptional flow, levelling, coverage, and it is fast-drying for minimal disruption. This product is ideal for new or previously painted interior trim, doors, woodwork, baseboards, stairwells, previously painted metal and cured plaster.



CHIP-TECH TECHNOLOGY Protects Painted Surfaces Against Chipping

Only Scuff-X® semi-gloss offers our patented scuff-resistant and Chip-Tech® technologies to deliver a unique blend of toughness and flexibility. It withstands direct and glancing blows on surfaces, including trim, door jambs, elevators, windows and columns. This finish also offers outstanding block-resistance for a faster return to service.

Key Benefits:

- Patented scuff resistant technology protects walls from the toughest scuff marks
- Patented Chip-Tech® technology to withstand the glancing blows and irregular hits (semi-gloss only)
- High-performance in a latex formula
- Single-component - easy to apply
- Withstands repeated washing
- Low VOCs - meets the most stringent VOC regulations
- Quick-drying for minimal disruption and fast job turnaround
- Available in thousands of Benjamin Moore® colours



Benjamin Moore is a proud member of the Canada Green Building Council, a nonprofit organization of building industry leaders working to make environmentally responsible, profitable, and healthy buildings.

Contact your Benjamin Moore® representative to learn more about Scuff-X® interior latex paint—and the Benjamin Moore advantage. To find a representative in your area, visit benjaminmoore.ca or call 1-866-708-9180.

Code	Finish	Vehicle Type	Volume Solids	Coverage ¹	Dry Time ²	VOC Range	Specifications
F484	Matte	Proprietary Acrylic Copolymer	40.0% ± 2%	32.5–37.2 sq. m. (350–400 sq. ft.)	Touch: 1 Hour Recoat: 2–3 Hours	< 50 g/L	Eligible for LEED® v4 and CHPS low emitting credit CDPH v1 Emission Certified
F485	Eggshell		41.0% ± 2%				
F486	Pearl		40.0% ± 2%				
F487	Semi-Gloss		38.0% ± 2%		Touch: 2 Hours Recoat: 4 Hours		

SDS and TDS are available at benjaminmoore.ca.

¹Theoretical coverage (sq. m. [sq. ft.]) per 3.79 L at recommended film thickness. ²Dry time at 25 °C (77 °F) at 50% RH.



Your Benjamin Moore® representative is here to answer your questions about Scuff-X®.

Find your rep: 1-866-708-9180 or benjaminmoore.ca.

